

# Robotic Process Automation Tools Checklist: A Buyer's Guide

Compare the leading automation tools to find the best solution for your needs

Today's Robotic Process Automation (RPA) market is flush with different tools and platforms offering competing features, pricing models, and approaches to integrating advanced technologies like AI. For most buyers, it comes down to choosing between four leading vendors: UiPath, Automation Anywhere, SS&C Blue Prism, and Microsoft's Power Automate.

Combining inputs from Auxis automation experts, the latest assessments from top research firms, and other leading third-party analyses, our RPA Tools Checklist compares the four most popular platforms against critical growth metrics, technology features, and essential capabilities. Read on to determine the solution that checks all your business needs – and see why UiPath emerges as the clear leader in the RPA space.



## Key Trends in the RPA Market



### RPA demand continues to surge

As AI adoption reaches an all-time high, RPA spending is expected to more than double between 2024 and 2028 to reach \$8.2 billion as vendors rely on RPA to help AI take action.

*(IDC "Worldwide Intelligent Process Automation Software Forecast, 2024-2028," August 2024)*



### Intelligent automation becomes the new normal

90% of RPA vendors will offer Generative AI-assisted automation in 2025.

*(Gartner 2024 Magic Quadrant for Robotic Process Automation)*



### Unified platforms on the rise

Vendors shift toward "unified automation platforms" that integrate RPA, AI, and workflow orchestration into existing enterprise systems.

*(IDC 2025 FutureScapes: Worldwide IT Industry Predictions)*



### Agentic automation enters the conversation

Global spending on agentic AI jumps from \$0 in 2023 to almost \$400 million in 2024, projected to grow 10-fold by 2028 to over \$4 billion. Agentic opens the door to processes that previously could not be automated - and agents need secure, reliable RPA tools to execute the new work.

*(IDC "Worldwide Intelligent Process Automation Software Forecast, 2024-2028," August 2024)*

# Comparison of Major RPA Tools on the Market

Shaded vendors stand as the leaders in each category



## MARKET ADOPTION

<b>Number of RPA Clients</b>	10,800+	3,200+	Does not disclose	2,700+
<b>RPA software market share</b>	35.80%	9.70%	3.30%	8.70%
<b>Market share of RPA software revenue</b>	Largest market share in all major industry verticals and business functions	No. 2 market share in most major industry verticals and business functions	<ul style="list-style-type: none"> <li>A top 5 provider for Insurance, Manufacturing, and Telecom industries, but not a leader in most other major verticals</li> <li>A top 5 provider for Finance &amp; Accounting, HR, Procurement, and Insurance industry-specific processes</li> </ul>	A top 5 provider in all major industry verticals and business functions
<b>Pricing</b>	<ul style="list-style-type: none"> <li>Customers say preconfigured product bundles push pricing to the higher side, however customers also gain value by leveraging the complementary tech the bundles offer</li> <li>Has simplified its pricing model and introduced usage-based pricing which is expected to make it more cost-effective and attractive to a broader range of customers</li> <li>Offers a free community cloud version for SMBs</li> </ul>	<ul style="list-style-type: none"> <li>Offers fixed-fee and user-based pricing</li> <li>Does not offer other popular commercial models such as usage-based and per transaction / process-based pricing</li> <li>Offers base and enterprise packages; enterprise option considered pricier compared to competitors and does not include some desirable features like CoE Manager</li> </ul>	<ul style="list-style-type: none"> <li>Low starting price compared to RPA competitors, especially for small deployments</li> <li>Often positioned as a complementary tool for large organizations already using Microsoft ecosystem</li> <li>Some customers complain costs add up over time as they end up paying for Azure, premium connectors, and additional Microsoft product licenses</li> </ul>	<ul style="list-style-type: none"> <li>Offers fixed capacity-based and usage-based pricing models for RPA</li> <li>Offers value bundles with different levels of infrastructure and functionality</li> <li>Does not offer other popular commercial models such as per transaction/process-based pricing or a fixed-fee enterprise-wide license with unlimited usage</li> <li>Recent addition of pay-as-you-go model for cloud expected to be more economical for that product</li> </ul>
<b>Technology ecosystem</b>	5,000+ implementation partners	700+ implementation partners	Does not disclose	100+ implementation partners

## EASE OF USE AND INTEGRATION CAPABILITIES

<b>User-friendly, intuitive interface</b>	Yes	Yes	Yes	Users describe the interface as outdated, slow, and cumbersome to navigate as compared to peers
<b>Ease of deployment with cloud and on-premise hosting options</b>	Unparalleled flexibility with on-premises, cloud-native, and hybrid deployment options	<ul style="list-style-type: none"> <li>Provides flexible hosting options including on-premise, cloud, and hybrid</li> <li>Cloud hosting still requires automation to be hosted on-premise by clients, which can impact implementation and scalability</li> </ul>	<ul style="list-style-type: none"> <li>Primarily cloud-based</li> <li>On-premise application assessed as heavy and less flexible</li> </ul>	<ul style="list-style-type: none"> <li>Provides flexible hosting options including on-premise, cloud, and hybrid</li> <li>Primarily designed for on-premise deployment</li> </ul>
<b>Scalability</b>	<ul style="list-style-type: none"> <li>Designed to handle both small and large automations</li> <li>Robust, AI-enhanced automation capabilities especially suitable for large-scale deployments</li> </ul>	<ul style="list-style-type: none"> <li>Primarily designed for enterprise-scale automation</li> <li>Fewer features than UiPath's enterprise-wide scalability options</li> </ul>	<ul style="list-style-type: none"> <li>Useful primarily for automating workflows and data processes within Microsoft environment</li> <li>Often reviewed as lacking the robust scalability, governance, and advanced orchestration capabilities required for complex enterprise environments</li> </ul>	Core strength lies in enterprise-grade automation for complex processes
<b>Integration with enterprise and niche applications</b>	<ul style="list-style-type: none"> <li>Over 100 integrations available to essential business apps</li> <li>Uses its large network of service providers and tech partners to provide pre-packaged, industry-specific solutions</li> <li>APIs for custom or niche integrations to reduce time-to-value</li> </ul>	<ul style="list-style-type: none"> <li>Provides pre-built connectors for essential business apps like SAP, Oracle, Microsoft, and Google applications</li> <li>Fewer options for more niche applications and custom APIs</li> </ul>	<ul style="list-style-type: none"> <li>Seamless integration within Microsoft ecosystem</li> <li>Integration with non-Microsoft systems usually requires more technical expertise and configurations</li> </ul>	<ul style="list-style-type: none"> <li>Offers pre-built connectors for ERPs, CRMs, and databases</li> <li>Custom integrations often require technical expertise</li> </ul>
<b>Reusability of bots and automation assets</b>	<ul style="list-style-type: none"> <li>Extensive pre-built workflows and bots</li> <li>Strong orchestrator support for managing reusable assets at scale</li> <li>Highly modular and intuitive for developers and non-technical users alike</li> </ul>	<ul style="list-style-type: none"> <li>Offers a rich library of reusable assets</li> <li>Slightly less intuitive for managing complex reusable assets compared to UiPath</li> </ul>	<ul style="list-style-type: none"> <li>Provides reusable templates and custom connectors</li> <li>Offers limited reusability for enterprise-scale automations</li> </ul>	<ul style="list-style-type: none"> <li>Rigid design and reliance on technical expertise make it less flexible</li> <li>Smaller library of reusable assets compared to competitors</li> </ul>

# Comparison of Major RPA Tools on the Market

Shaded vendors stand as the leaders in each category



## CAPABILITIES

	UiPath	Automation Anywhere	Power Automate	SS&C   blueprism
<b>Ease of handling unstructured data with intelligent document processing (IDP)</b>	<ul style="list-style-type: none"> <li>#1 AI-powered IDP tool for processing unstructured and structured documents in top vendor assessments</li> <li>User-friendly interface and pre-built models facilitate efficient processing of complex documents</li> <li>Also offers communications mining to extract unstructured data from communications in near real time</li> </ul>	<ul style="list-style-type: none"> <li>AI-powered IDP tool enables extraction of data from unstructured documents</li> <li>Offers robust capabilities but may require more configuration compared to UiPath</li> </ul>	<ul style="list-style-type: none"> <li>More suited for structured data scenarios</li> <li>May require supplementary tools to process complex unstructured data</li> </ul>	<ul style="list-style-type: none"> <li>Recent enhancements added to improve processing of unstructured data</li> <li>May need additional integration with third-party AI tools to achieve functionality comparable to UiPath and Automation Anywhere</li> </ul>
<b>Agentic automation capabilities (ability to incorporate AI-driven decision-making and autonomous functionality)</b>	<ul style="list-style-type: none"> <li>Robust agentic orchestration framework enabling RPA, AI agents, AI models, and humans to work together</li> <li>Integrates various AI and machine learning (ML) models directly into automation workflows</li> <li>Seamless integration with third-party AI platforms</li> </ul>	<ul style="list-style-type: none"> <li>Users mention orchestration framework has process composer and scheduling limitations, lacks built-in orchestration features</li> <li>Reliant on partnerships for AI and ML integrations into automation workflows for AI-driven decision-making</li> </ul>	<ul style="list-style-type: none"> <li>Limited agentic orchestration framework focused on managing workflows within the Microsoft ecosystem</li> <li>AI-powered capabilities but lacks the depth of orchestration and independence offered by UiPath</li> </ul>	<ul style="list-style-type: none"> <li>Primarily rules-based automation with limited native AI/ML capabilities</li> <li>Less focused on adaptive, decision-making automation compared to peers</li> </ul>
<b>Other complementary next-gen capabilities (Generative AI, API automation, process mining, etc.)</b>	<ul style="list-style-type: none"> <li>GenAI and specialized AI capabilities for building robust, scalable, trustworthy, and customized solutions for automating business processes</li> <li>Proprietary LLMs to customize AI models to its exact requirements</li> <li>Also offers pre-built connectors with best-of-breed LLM models such as OpenAI's ChatGPT, Anthropic's Claude, as well as those from Google, Microsoft, and IBM</li> <li>Extensive API automation capabilities, advanced process mining and task mining tools.</li> </ul>	<ul style="list-style-type: none"> <li>Supports AI-driven automation but less focused on GenAI than UiPath</li> <li>Strong API integration automation capabilities, offers process discovery and analysis</li> </ul>	<ul style="list-style-type: none"> <li>Integrates with Microsoft's GenAI models but narrower scope of GenAI capabilities</li> <li>Strong API automation support</li> <li>Basic process discovery</li> </ul>	<ul style="list-style-type: none"> <li>Lacks native GenAI capabilities</li> <li>API integration requires more technical expertise and customization</li> <li>Does not natively offer process mining tools</li> </ul>
<b>Human-in-the-loop (HITL) capabilities</b>	HITL built into workflows to facilitate seamless collaboration and oversight	Robust HITL functionalities	Less advanced HITL capabilities, offers basic features	Limited HITL functionalities, primarily focused on fully automated processes
<b>Citizen developer support</b>	<ul style="list-style-type: none"> <li>User-friendly interface and extensive training resources make platform accessible to non-technical users</li> <li>Ability to create automations with minimal coding empowers citizen developers</li> <li>Automation Express, free "lite" version of automation environment, available for citizen developer support</li> </ul>	Interface with low-code/no-code tools suitable for business users without extensive coding knowledge	Users with little to no coding experience can build custom business applications	Primarily targets professional developers, with a less-intuitive interface, reliance on programming knowledge, and a focus on complex automation scenarios
<b>Automation Center of Excellence (CoE) support</b>	<ul style="list-style-type: none"> <li>Comprehensive support for establishing and scaling Automation CoEs</li> <li>Robust governance, deployment features, and a wide range of pre-defined activities, including web automation and AI services</li> <li>Extensive training resources and community support</li> </ul>	<ul style="list-style-type: none"> <li>Has a CoE-specific product for governing, tracking, and measuring automation program performance</li> <li>Strong CoE support with features such as bot management tools to allow users to monitor bots in large-scale deployments</li> </ul>	Some support for automation initiatives through Automation CoE toolkit, but reviewers say its capabilities in handling complex, large-scale CoE operations are less advanced	<ul style="list-style-type: none"> <li>CoE support more focused on large-scale enterprises and highly regulated environments</li> <li>Interface lacking the agility or user-friendliness of other three could impact CoE adoption in organizations with limited technical expertise</li> </ul>

# Comparison of Major RPA Tools on the Market

Shaded vendors stand as the leaders in each category



## SECURITY & MAINTENANCE

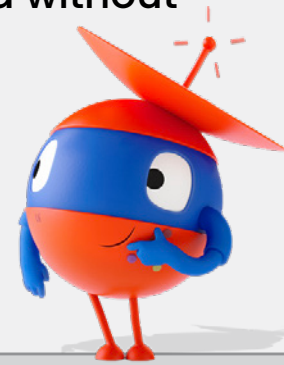
	UiPath	Automation Anywhere	Power Automate	SS&C   blueprism
Monitoring and analytics	<ul style="list-style-type: none"> <li>Offers the ability to leverage AI/ML to predict if SLAs for automations implemented are not going to be met</li> <li>Ability to track the status of robots in near real time and escalate issues by notifying users through applications such as Microsoft Teams and Slack</li> <li>Ability to create own dashboards with custom metrics and tie to ROI through Insights product</li> </ul>	<ul style="list-style-type: none"> <li>Pre-configured dashboards to monitor metrics related to license utilization</li> <li>No AI/ML capabilities to predict if SLAs for automations implemented are not going to be met or to automatically notify users in case SLAs are not going to be met</li> <li>No advanced analytics features such as recommendations to optimize license utilization or the number of robots/licenses required to meet critical SLAs</li> </ul>	<ul style="list-style-type: none"> <li>Offers built-in monitoring and analytics tools tailored for automation workflows</li> <li>Predictive capabilities for meeting SLAs and license utilization part of product roadmap</li> </ul>	<ul style="list-style-type: none"> <li>Solid monitoring and analytics functionalities, including process monitoring, audit trails, and performance metrics</li> <li>Limited native capabilities for AI/ML-driven monitoring, may require additional configuration and integration with external tools</li> </ul>
Bot resilience	<ul style="list-style-type: none"> <li>Robust resilience features, including advanced error handling, retry mechanisms, and detailed logging</li> <li>Platform designed to manage exceptions effectively, maintaining bot stability during unexpected scenarios</li> <li>GenAI to enhance bot resilience, launching intelligent auto-healing capabilities in early 2025 for more resilient bots</li> </ul>	<ul style="list-style-type: none"> <li>Reliable bot performance with features like auto-recovery and intelligent error handling</li> <li>Vendor assessments voice concerns about the inability to automatically restart robots in case of hardware, virtual machines, or target application failure</li> </ul>	<ul style="list-style-type: none"> <li>Basic resilience features suitable for simpler automation tasks</li> <li>In complex enterprise scenarios, bot resilience may not match that of peers, potentially leading to increased maintenance efforts</li> </ul>	<ul style="list-style-type: none"> <li>Renowned for its resilient and scalable RPA platform, emphasizing robust error handling and recovery mechanisms</li> <li>Architecture supports high availability and disaster recovery</li> </ul>
Security	<ul style="list-style-type: none"> <li>Strong security features such as data encryption, audit logs, secure credential storage, and role-based access control throughout products' development lifecycle</li> <li>Integrates with other security providers to extend capabilities</li> </ul>	<p>Strong security features such as end-to-end encryption, secure credential management, and comprehensive audit trails, with focus on data protection and compliance</p>	<p>Security features are more aligned with the Microsoft ecosystem, organizations may need to implement additional measures when integrating with external systems</p>	<p>Advanced features such as role-based access control, detailed audit logs, and data encryption, with strong emphasis on compliance and governance</p>

Sources: Everest Group PEAK Matrix for RPA Technology Provider AR Report 2023, Gartner Magic Quadrant for Robotic Process Automation, Auxis, UiPath, Automation Anywhere, Microsoft Power Automate, SS&C Blue Prism, PeerSpot, and other tool analysis from Kanerika, Capitalize Consulting, UDig, eleks, RelevanceLabs, itransition, and Rencore



## Why UiPath is No. 1

- ✓ Leader on Everest Group's Robotics Process Automation Products PEAK Matrix Assessment for eight consecutive years
- ✓ #1 RPA platform on Gartner's Magic Quadrant for RPA for five straight years
- ✓ Highest ranking in market adoption, portfolio mix, vision and strategy, deployment and maintenance, and product training and support on Everest Group RPA Matrix
- ✓ Rated as the best RPA software for small, mid-market, and enterprise businesses on software review platform G2
- ✓ Uniquely focused on using GenAI to enhance RPA capabilities as part of its product strategy, offering an unmatched ability to seamlessly connect to all the leading GenAI platforms
- ✓ Built to support the full automation lifecycle from discovery to measurement
- ✓ Vendor assessments consider it the best combination of attended and unattended automation
- ✓ 113% dollar-based net retention rate for license and subscription renewals demonstrates high customer satisfaction
- ✓ Only RPA leader to offer a free community cloud version of its product specifically for SMBs, allowing them to get started without significant upfront investments



Once you have chosen your solution, maximize automation benefits with an exceptional UiPath partner

## Why Auxis: A World Leader in AI and automation



- ✓ 2024 winner of the **UiPath Partner of the Year – Foundational, Americas** award
- ✓ Platinum Partner and Certified Professional Services accreditations make us a top 1% UiPath Partner worldwide
- ✓ Recognized as a world leader in AI and automation with a proven track record of sustainable success for organizations ranging from mid-market to enterprise
- ✓ Over eight years of UiPath platform experience, with thousands of solutions built across industries
- ✓ Combining business and technical expertise to ensure customers work faster and smarter, delivering optimized business processes and automation aligned to business goals
- ✓ Deep pool of top-tier, UiPath-certified AI and automation talent located onshore and nearshore within your time zone
- ✓ Unique nearshore delivery model offers real-time collaboration and language and cultural affinity that overcomes the challenges of Asia-based service delivery and hiring difficulties in the Americas

For more insights into RPA tools and why UiPath is #1, read our [2025 RPA tools guide](#).



Visit [auxis.com](https://www.auxis.com)

To learn more about how Auxis can support you in your RPA and automation journey, [schedule a consultation](#) today!

auxis